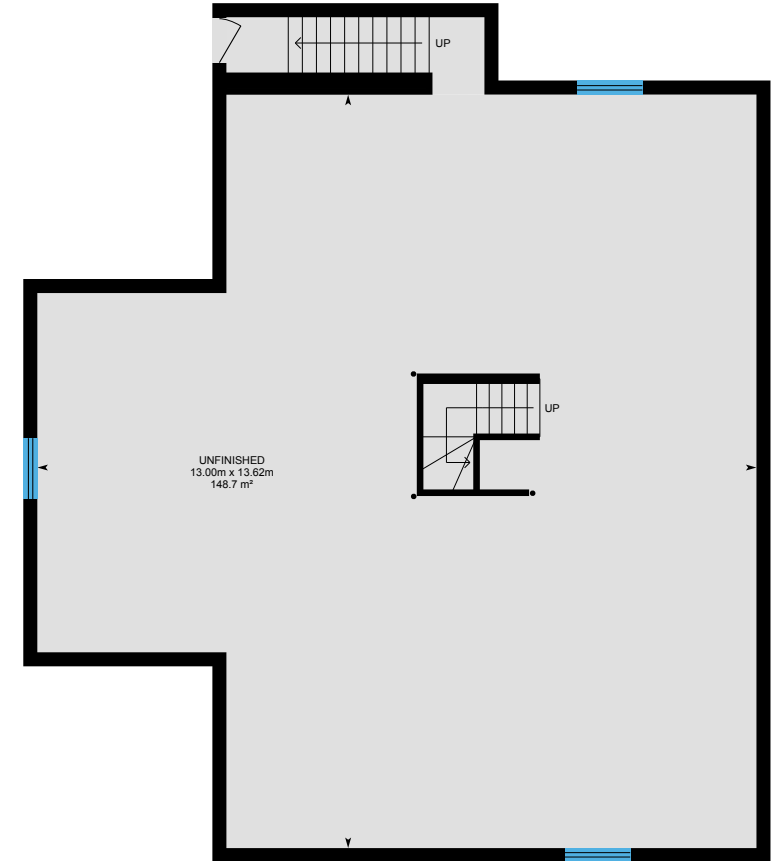


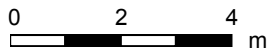
# 127 Welsh Ln, Prince Edward, ON

Main Building: Total Exterior Area 347.1 m<sup>2</sup>



**Main Floor**  
Exterior Area 173.4 m<sup>2</sup>

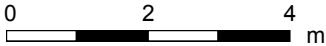
**Basement (Below Grade)**  
Exterior Area 173.7 m<sup>2</sup>



PREPARED: May, 2019

# 127 Welsh Ln, Prince Edward, ON

Main Floor Total Exterior Area 173.4 m<sup>2</sup>  
Total Interior Area 159.4 m<sup>2</sup>



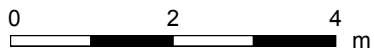
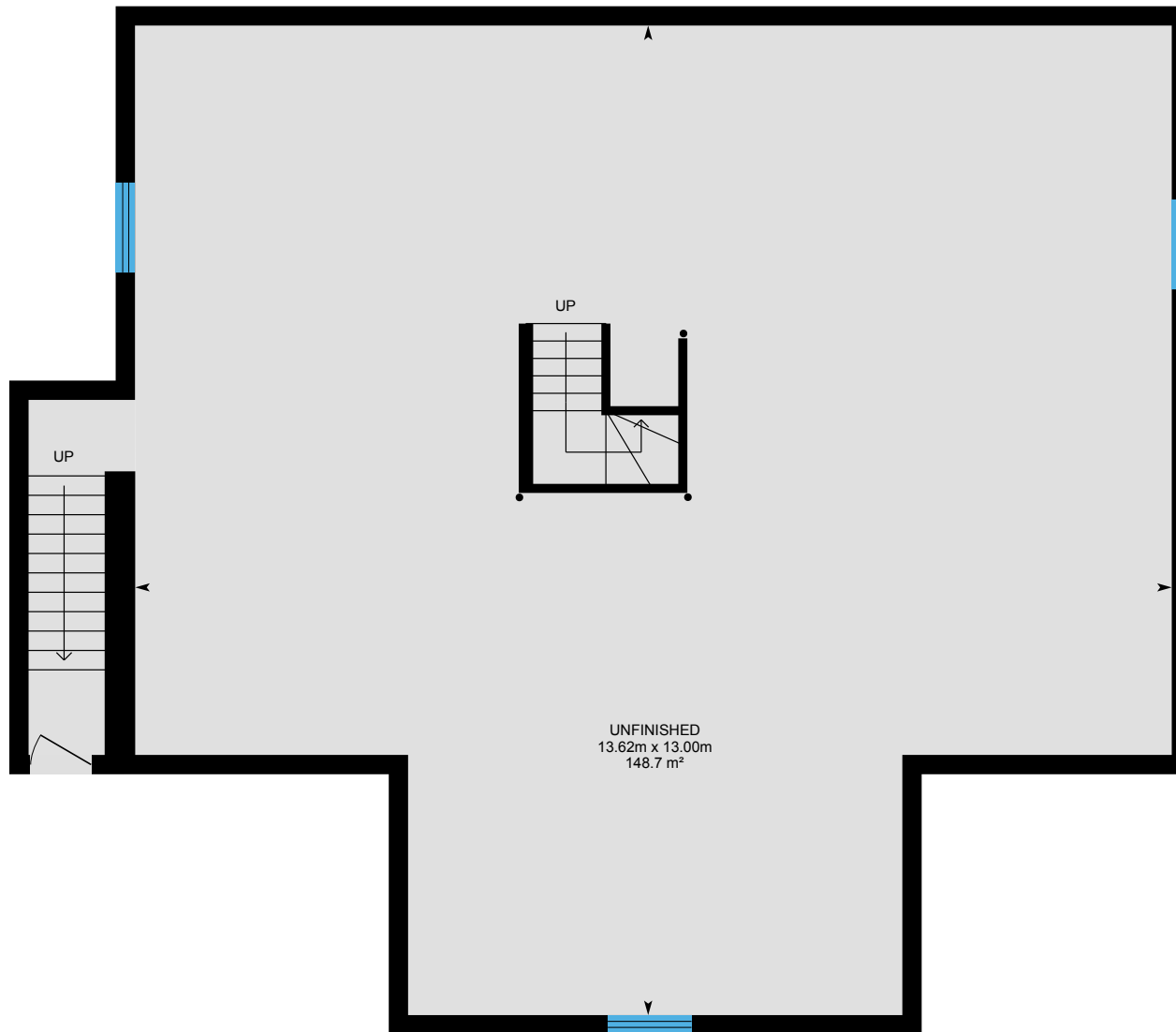
PREPARED: May, 2019



White regions are excluded from total floor area. All room dimensions and floor areas must be considered approximate and are subject to independent verification. For method of measurement please see <https://youriguide.com/measure/>.

# 127 Welsh Ln, Prince Edward, ON

**Basement** Total Exterior Area 173.7 m<sup>2</sup>  
Total Interior Area 159.2 m<sup>2</sup>



PREPARED: May, 2019



# 127 Welsh Ln, Prince Edward, ON

## Property Details

### Room Measurements

Only major rooms are listed. Some listed rooms may be excluded from total interior floor area (e.g. garage). Room dimensions are largest length and width; parts of room may be smaller. Room area is not always equal to product of length and width.

### Main Building

#### MAIN FLOOR

3pc Bath: 2.97m x 1.67m | 4.5 m<sup>2</sup>  
3pc Ensuite: 3.05m x 1.63m | 4.5 m<sup>2</sup>  
Bedroom: 3.02m x 3.09m | 9.3 m<sup>2</sup>  
Bedroom: 3.91m x 2.81m | 9.7 m<sup>2</sup>  
Bedroom: 3.02m x 2.75m | 8.3 m<sup>2</sup>  
Dining: 2.57m x 6.75m | 17.3 m<sup>2</sup>  
Kitchen: 4.24m x 3.56m | 15.0 m<sup>2</sup>  
Laundry: 2.57m x 3.43m | 7.5 m<sup>2</sup>  
Living: 4.38m x 6.75m | 29.6 m<sup>2</sup>  
Master: 4.78m x 3.43m | 16.4 m<sup>2</sup>

#### BASEMENT

Unfinished: 13.00m x 13.62m | 148.7 m<sup>2</sup>

### Floor Area Information

For explanation of floor area calculations and method of measurement please see <https://youriguide.com/measure/>.

### Main Building

#### MAIN FLOOR

Interior Area: 159.4 m<sup>2</sup>  
Perimeter Wall Length: 55.3 m  
Perimeter Wall Thickness: 25 cm  
Exterior Area: 173.4 m<sup>2</sup>

#### BASEMENT (Below Grade)

Interior Area: 159.2 m<sup>2</sup>  
Perimeter Wall Length: 57.0 m  
Perimeter Wall Thickness: 25 cm  
Exterior Area: 173.7 m<sup>2</sup>

### Total Floor Area

Main Building Interior: 318.6 m<sup>2</sup>  
**Main Building Exterior: 347.1 m<sup>2</sup>**